

THE GW STAFF COUNCIL

Pillars Newsletter

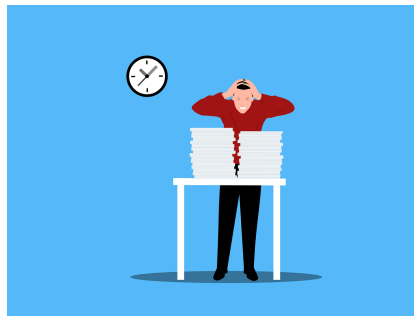
A Message from Staff Council President, Bridget Schwartz

Colleagues,

I know many of us are anticipating the approach of the fall semester. This summer has been a whirlwind of preparation for the return of students. Over my 14 years at GW, each summer seems to get busier, leaving less time to recharge. To better understand staff stress and burnout, we've created a brief survey for this month. Please consider sharing your insights so we can better represent the staff community. As we head into the final weeks of summer, I hope you can find some time to rest, plan for future time off, support one another, and [explore the wellness resources](#) available to staff.

Bridget Schwartz

Staff Burnout Survey



The purpose of this survey is to assess GW staff burnout and the resulting symptoms. We recognize that the contents of this survey can be sensitive and want to remind you that **while we collect email addresses, they are only used to validate that the submitter is a part of the GW community. Identifying information is only visible to Staff Council Executives. We will ask for consent before using specific comments for any outside purposes and will remove any identifying information. We never share your email address.**

All feedback is used to better determine the initiatives of the council. The more feedback we receive, the better we are able to support GW staff.

[Staff Burnout Survey](#)

University Closed for Election Day

We are excited to support the recent announcement that university classes will be canceled and offices will be closed on Election Day, as announced on July 30 through university mail. As the message stated, this change will "enable our community's ability to fully participate in this important democratic moment." The university will also be closed on Inauguration Day, as has been the tradition.

Seeking: New DAR Representative

The Staff Council is seeking a new representative from the Division of Development and Alumni Relations (DAR).

Representatives must, at a minimum, join at least one [Staff Council committee](#) and attend Staff Council meetings. Most committees meet monthly and Staff Council meets on the third Friday of every month from 10:00 a.m. – 12:00 p.m. All meetings are virtual. You can find a full description of the Representative position in the [Staff Council Bylaws](#).

Eligibility:

Per the Staff Council Bylaws, GW Representatives must:

1. Have concluded their Introductory Employment Period (IEP)
2. Be in a benefited position (part-time or full-time)
3. Work in the division they are representing
4. Should not hold an executive-level position. Executive positions have employee classes of E1-3, please speak to your HR

If you are interested, please email a statement of candidacy (why you are interested in the position) to staffcouncil@gwu.edu by August 9, 2024. The Staff Council will review candidates and vote on the nominees at the August 16, 2024 meeting in accordance with the Staff Council Bylaws.

If you have any questions about the role and responsibilities, you may reach out to Staff Council President Bridget Schwartz directly at baschwa@gwu.edu.

Community Connections: Orientation, Class Year, and Families Program Team



The Orientation, Class Year, and Families Program team has seen a lot of transition in the past several months! With the expansion of our team, we have been able to take on more class year-specific programming, honoring traditions like Halfway to Graduation and District Connections (GWxDC), while also adding new spaces for celebration like last year's first-ever Senior Week and a junior class trip. With the reinstatement of Families Programs at GW, we have hosted a summer webinar series, Summer Family Welcome events across the country, and we have utilized CampusESP to provide supporters with information, resources, and connection points via Family Connections.

With New Student Orientation coming up next month, we are hard at work planning a program that not only brings the fun and excitement to students starting a new chapter, but one that also offers incoming students and their families opportunities to create connections and begin building the foundation for their belonging at GW. Our five Student Coordinators and 30 Orientation Leaders have helped shape our office's impact by working across all three functional areas to bring support and guidance to our incoming students and their families. With a team of four new staff members (and one on the way!) and a new director, we can't do the work we do without the help and support of our campus partners who have been key in helping us train our students, volunteering for our programs, and being spaces of support when we need it. Our team loves a good "Terrace Time" moment during lunch. If you're ever on the 3rd floor of the USC, come have lunch with us!

We want to recognize and appreciate the amazing work staff across the university do every day. This feature was designed to highlight one department, office, or team each month, allowing us to get to know our staff and how they contribute to GW's success. We hope to celebrate achievements, support initiatives, and find new ways for staff to stay connected with each other and the community.

If you'd like to nominate your department, office, or team for Community Connections or would like to see another department, office, or team featured, please email your nomination to staffcouncil@gwu.edu with a brief description of the fabulous work they're doing.

Staff Resources: Discounts Available for GW Staff

Did you know? As a GW staff member, you are eligible to receive various discounts for goods and services including: insurance, phone plans, Capital Bikeshare, GrubHub, and even travel & entertainment. For more information, click the button below to access the discount list on the HRMD website.

[View Available Discounts](#)

Attend a Staff Council Meeting

Future and Past Meetings: You can find meeting minutes from past meetings on the [Staff Council website](#), along with information on upcoming meetings. Registration is required so please [be sure to register](#) for any upcoming meetings you'd like to attend. If you have any questions or topics that you would like to be addressed, please send them to your [Staff Council Representative](#) in advance of the meeting.

The GW Staff Council meets on the third Friday of each month from 10:00 a.m. to 12:00 p.m. EST. GW Staff Council meetings are held via Zoom and are open to the GW community. Please direct any related questions to staffcouncil@gwu.edu.

[Submit Your Ideas and Feedback](#)

[Manage](#) your preferences | [Opt Out](#) using TrueRemove™
Got this as a forward? [Sign up](#) to receive our future emails.
View this email [online](#).

1918 F Street, NW None | Washington, DC 20052 US

This email was sent to .
To continue receiving our emails, add us to your address book.

[Subscribe](#) to our email list.